

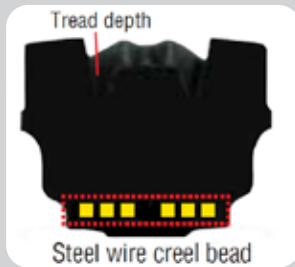
# **HULK SDS** **LONG TIRE LIFE.** **REDUCED DOWNTIME.** **INCREASED** **PRODUCTIVITY.**

- Extra deep sturdy block tread
- High solid to void pattern
- Large central block for long tread wear
- Solid construction eliminates punctures
- Steel wire creel beads prevent rim slippage

**GALAXY**  
APPLICATION SPECIFIC, PURPOSE BUILT.

# THE HULK SDS ADVANTAGE

The Hulk SDS is a significant technological achievement, and it is all geared toward providing a longer service life and better cost of ownership for our customers. With a 16-inch rim diameter we are able to put **more rubber per tire, providing longer-life and reducing the number of costly tire changeovers.** We designed the unique, solid construction specifically for machinery and severe-duty applications seen in the waste/recycling and scrap-yard industries.



The Hulk SDS tire assembly has a trademark Hulk block pattern with 80/32nds of non-skid depth, one of the **deepest available in the industry.** Ask your sales rep about the Hulk SDS today!

| Specs        | Beefy Baby SDS | Hulk SDS   |
|--------------|----------------|------------|
| Size         | 33x12-20       | 33x12-16   |
| Rim          | 7.50-20        | 8.00-16    |
| OD (in)      | 32             | 32.68      |
| SW (in)      | 12             | 10.91      |
| Weight (lbs) | 193            | 237        |
| NSD (32nds)  | <b>51</b>      | <b>80</b>  |
| 60J (32nds)  | <b>92</b>      | <b>106</b> |
| Aperture     | Single Row     | Single Row |

|                |           |           |
|----------------|-----------|-----------|
| Pneumatic Size | 12-16.5   | 12-16.5   |
| NSD (32nds)    | <b>28</b> | <b>44</b> |

## GALAXY HULK SDS WITH APERTURES



The Galaxy Hulk SDS is extra deep sturdy block pattern which has high solid to void pattern with large central block for long tread wear. Its solid construction eliminates punctures, ensuring maximum uptime and steel wire creel beads prevent rim slippage. It is available with tire + rim assembly (Lock ring/standard heel type) for quick change of tire. Hulk SDS gives maximum tread depth available to provide extended tire life with lowest cost of ownership in the most severe application.



| TYPE                  | PRODUCT CODE | SIZE     | ALT. SIZE | SIDE  | TYPE       | NSD (32NDS) | PREFERRED RIM | OD   | WIDTH | RC | SLR | MAX LOAD (LBS) | PSI | MAX SPEED |
|-----------------------|--------------|----------|-----------|-------|------------|-------------|---------------|------|-------|----|-----|----------------|-----|-----------|
| W/ APERTURE TIRE ONLY | 583717       | 30X10-16 | 10-16.5   | Left  | Solid Tire | 75          | 6             | 30.2 | 9.5   |    |     | 8085           | N/A | 5         |
|                       | 583718       | 30X10-16 | 10-16.5   | Right | Solid Tire | 75          | 6             | 30.2 | 9.5   |    |     | 8085           | N/A | 5         |
|                       | 583719       | 33x12-16 | 12-16.5   | Left  | Solid Tire | 80          | 8             | 32.7 | 10.9  |    |     | 10420          | N/A | 5         |
|                       | 583720       | 33x12-16 | 12-16.5   | Right | Solid Tire | 80          | 8             | 32.7 | 10.9  |    |     | 10420          | N/A | 5         |
| W/ APERTURE ASSEMBLY  | 589717       | 30X10-16 | 10-16.5   | Left  | 8 ON 8     | 75          | 6             | 30.2 | 9.5   |    |     | 8085           | N/A | 5         |
|                       | 589718       | 30X10-16 | 10-16.5   | Right | 8 ON 8     | 75          | 6             | 30.2 | 9.5   |    |     | 8085           | N/A | 5         |
|                       | 589719       | 33x12-16 | 12-16.5   | Left  | 8 ON 8     | 80          | 8             | 32.7 | 10.9  |    |     | 10420          | N/A | 5         |
|                       | 589720       | 33x12-16 | 12-16.5   | Right | 8 ON 8     | 80          | 8             | 32.7 | 10.9  |    |     | 10420          | N/A | 5         |

VISIT [YOKOHAMA-OHT.COM](http://YOKOHAMA-OHT.COM) FOR DETAILED LOAD AND PRESSURE TABLES

Distributor:

Yokohama Off-Highway Tires (YOHT) is a division of The Yokohama Rubber Co., specializing in Agriculture, Forestry, Construction, Industrial, Material Handling, Earthmoving, Mining, Port and other commercial tires. YOHT sells its diverse product range, consisting of over 4,000 SKUs, in over 120 countries through its subsidiaries and channel partners. YOHT products are engineered to be application-specific and purpose-built. For more information visit [www.yokohama-oht.com](http://www.yokohama-oht.com) or email us at [info@yokohama-oht.com](mailto:info@yokohama-oht.com).



Contact Yokohama Off-Highway Tires America, Inc. at (800) 343-3276 or (339) 900-8080 for your nearest Yokohama OHT Tire Dealer.

[facebook.com/yokohamaohta](https://www.facebook.com/yokohamaohta)
[@yokohamaohta](https://twitter.com/yokohamaohta)
[yohta-blog.yokohama-oht.com](http://yohta-blog.yokohama-oht.com)
[yokohama-oht.com](http://yokohama-oht.com)